



## Rabbit anti CRP (NT) Polyclonal Antibody

Alternative Name(s): C-reactive protein, Pentraxin 1

### Order Information

- **Description:** CRP (NT)
- **Catalogue:** 601-300
- **Lot:** See label
- **Size:** 100ug/200ul
- **Host:** Rabbit
- **Clone:** nan
- **Application:** IHC(P), WB
- **Reactivity:** Hu, Ms, Rt

### ANTIGEN PREPARATION

A synthetic peptide corresponding to the N-terminus of human CRP protein (from 67aa-75aa). This sequence is identical to human, mouse and rat.

### BACKGROUND

C-Reactive Protein (CRP) belongs to the pentaxin family. It was discovered in serum of patients as a non-antibody precipitin of C-plysaccharide from pneumococci. It is involved in several host defense related functions based on its ability to recognize foreign pathogens and damaged cells of the host and to initiate their elimination by interacting with humoral and cellular effector systems in the blood. Consequently, the level of this protein in plasma increases greatly during acute phase response to tissue injury, infection, or other inflammatory stimuli. Serum CRP values are routinely measured to detect or monitor many human diseases and minor elevations of C-reactive protein are predictive of cardiovascular events in patients with coronary heart disease.

### PURIFICATION

The Rabbit IgG is purified by Epitope Affinity Purification

### FORMULATION

This affinity purified antibody is supplied in sterile Phosphatebuffered saline (pH7.2) containing antibody stabilizer

### SPECIFICITY

This antibody recognizes ~25 kDa of human CRP protein. It cross-reacts to human, mouse and rat origins.

### STORAGE

The antibodies are stable for 24 months from date of receipt when stored at -20oC to -70oC. The antibodies can be stored at 2oC-8oC for three month without detectable loss of activity. Avoid repeated freezing-thawing cycles.

### APPLICATIONS/SUGGESTED WORKING DILUTIONS\*

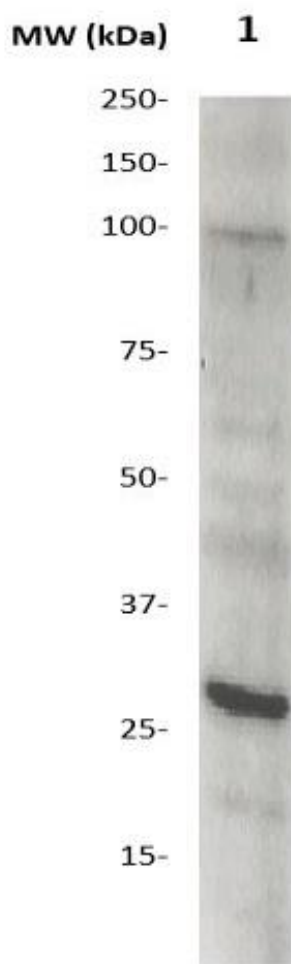
- Western Blot: 0.1-1 µg/ml
- ELISA: 0.01-0.1 µg/ml
- Immunoprecipitation: 2-5 µg/ml
- IHC: 2-10 µg/ml
- Flow cytometry: Not tested
- Molecular Weight: 25.0
- Positive Control: Kidney Tissue
- Cellular Location: Cell Membrane

\*Optimal dilutions should be determined by researchers for the specific applications.

### FOR RESEARCH USE ONLY.

AbboMax, Inc 2528 Qume Drive, Suite 8, San Jose, California 95131, USA  
1 408-573-1898 (Tel). 1 408-573-1858 (Fax). [www.abbomax.com](http://www.abbomax.com) [info@abbomax.com](mailto:info@abbomax.com)

## DATA ATTACHMENTS



Western Blot: The recombinant protein of full length human CRP (10 ug/lane) was blotted by Rabbit anti CRP (NT) (Cat#601-300) at 1:500. An immunoreactive band was observed at ~25 kDa.

## REFERENCES

### FOR RESEARCH USE ONLY.

AbboMax, Inc 2528 Qume Drive, Suite 8, San Jose, California 95131, USA  
1 408-573-1898 (Tel). 1 408-573-1858 (Fax). [www.abbomax.com](http://www.abbomax.com) [info@abbomax.com](mailto:info@abbomax.com)